



*Celebrating 40 Years
 Helping People...Improving Lives.*



ANNUAL REPORT
2013-2014

Our Vision

MISSION & VALUES

Our Mission

Helping People...Improving Lives

Our Vision

Healthy, mobilized communities where people's needs are met.

Our Values

These are the values that guide the work with, and of, clients, families, volunteers and staff:

Dependability

- Financial accountability
- Sustainable services and organization
- Ensure client, worker, volunteer safety
- Practice prudence

Integrity

- Ethical actions
- Equity and fairness
- Open governance
- Trust
- Judiciousness

Volunteerism

- Community responsibility
- Community engagement
- Value of volunteerism to volunteers, complemented by excellent staff
- Value of volunteerism to community

Responsiveness

- Responsive to all stages of life
- Engagement of staff and volunteers
- Assess needs
- Forward thinking
- Consistent and responsive
- Innovative
- Decisive
- Client centred

Excellence

- Premier quality services and supports
- Committed and engaged staff
- Environmental stewardship
- Continuous quality improvement
- Measured and recognized for quality

Board

OF DIRECTORS

Penny Thomsen, Chair
Keith Rolfe, Vice-Chair
Geri Hinton, Executive Member-at-Large
Chuck Rowe, Secretary
Sue Wilson, Treasurer

Joan Axford
Christopher Causton
Greg Conner
Hal Irwin
Jo-Anne Kahan
Holly Tuokko

Leadership Message

From the Chair of the Board

It has been an honour to serve on the Board, including as Board Chair for the past two years. As I retire, it's humbling to see all that has been achieved by Beacon's extraordinary volunteers and staff. The following pages offer a succinct review of this past year's accomplishments, but there is so much more to tell. A few key highlights include:

- Securing Island Health's Home Support Services contract for the second time. Beacon was selected over many other organizations (including national competitors) to continue serving thousands of people as the Health Authority's sole provider of home support care on Southern Vancouver Island and the Southern Gulf Islands. This speaks volumes about Beacon's reputation as a reliable, skilled, and compassionate provider of care.
- Winning the 2014 Excellence in BC Health Care Award – Top Innovation for our trailblazing Licensed Dementia Housing facilities. Our social model of care for those living with dementia is also being studied by Island Health and other organizations for broader implementation.
- Karen Mac, one of our own Community Health Workers, won the inaugural BC Care Provider of the Year Award for her commitment to quality, compassion, and excellence in delivering care to many clients. The Honourable Terry Lake, BC Minister

From the Acting CEO

The announcement that Beacon will be re-awarded the Home Support contract is fantastic news for the organization but we should not lose sight of the many other programs we operate. We were also fortunate to receive renewals on many other key contracts during the year. This includes significant funding to continue our valuable work supporting children, families, and youth. We recently signed a three year agreement with BC Housing to ensure continuation of our Out of the Rain Youth Shelter program. This is evidence that Beacon is a trusted name to consistently achieve the objectives of our many community programs. Without the hard work of our staff and volunteers, this would not be possible.

I would like to recognize our Board Members who will be leaving this year – Hal Irwin, Holly Tuokko, and especially Penny Thomsen. Penny is our outgoing Board Chair, retiring after six years on the Board

of Health, presented the award and congratulated Karen for her outstanding efforts. She's one of many exceptional staff at Beacon.

In March of this year, we bid farewell to Isobel Mackenzie, who led Beacon for 19 years as Chief Executive Officer. It was a time of mixed emotions. We were proud of Isobel's appointment as BC Seniors Advocate – Canada's first! – but knew Beacon would miss her dedicated and capable leadership. However, Isobel helped build a very strong organization: it continues to thrive and is well prepared for continued success, thanks to the commitment of our staff, volunteers, partners, donors and funders.

Together, these people form a remarkable community, dedicated to helping people and improving lives. My time working with each of them – and with my Board colleagues – has been awe-inspiring. I'm grateful for their support, proud of their accomplishments, and looking forward to hearing of their ongoing, collective successes.

Best wishes as Beacon celebrates 40 successful years,



Penny Thomsen, Chair of the Board

and two years as Board Chair. She has done an outstanding job and showed deep commitment and enthusiasm to Beacon Community Services, helping to guide our organization through a time of transition. All of our Board Members volunteer a significant amount of their time to ensure our organization is on the right track. All of our Board deserves special thanks, and I offer a warm welcome to those who will join us this year.

Thanks to all of our members, volunteers, staff, and community partners for their support this year and for the past 40. I look forward to working with you all.

Sincerely,



Bob Boulter, Acting Chief Executive Officer

Enhancing

CHILDREN'S HEALTH, SAFETY, AND LOVE OF LEARNING



575
families supported
by Early Years
Programs

130
children in after
school care

TEAM
cared for 41 infants
and toddlers

80,000
books collected
for 1000x5
program

Crossing Guards Program assists in keeping our roads safe for students going to and from school, and for all road users in the Greater Victoria area. Serves 25 schools with 36 crossing guards.

Roots of Empathy program provides opportunities for elementary school aged children to develop empathy for others by engaging with visiting infants in the classrooms. There are ten programs and ten trained facilitators in schools across the Peninsula.

Peninsula Best Babies supports women during their pregnancy to help deliver healthy babies. Moms and dads learn about food preparation, budgeting, rest, healthy life choices, exercise and stages of child development.

Parent-Child Mother Goose is an early literacy program which teaches parents songs, rhymes, and stories to share with their young children. The program promotes parent-child attachment

and builds parental confidence and social connections while providing positive language and communication experiences for infants and toddlers.

Sidney StrongStart provides free, school-based early learning programs for pre-schoolers and their parents or caregivers. Children develop important skills through play, art, stories, songs, and learning healthy eating habits.

1000 X 5 Children's Book Recycling Project accepts donations of gently used children's books through schools and other locations. Volunteers sort books into age-appropriate categories. Books are bagged as gifts for families and distributed to StrongStart Centres, family-serving agencies on the Peninsula, and the Co-op Food Centre. The likelihood of success in school is increased when children have at least a thousand books read to them by the time they are five years-old.

Car Seat Safety is offered in partnership with the Capital Regional District Traffic Commission. Car Seat Safety information sessions and checks are offered to address child safety, as 50% of child injuries in car accidents are due to car seats installed incorrectly.

Peninsula Connections for Early Childhood (PCEC) advocates the importance of the early years through events, programs and projects. The benefits of literacy and linkages to community resources are highlighted.

Teen Education and Motherhood (TEAM I and TEAM II) Centres provide licensed infant and toddler care at two sites: Stelly's Secondary and the Individual Learning Center. With in-kind support from School District 63, TEAM provides infants and toddlers a safe, enriching environment while their parents attend school. Children receive a variety of experiences to foster their development and get a healthy breakfast, lunch and snack.

Nurturing

HEALTHY RELATIONSHIPS BETWEEN YOUTH AND FAMILIES

2477
meals served for
at-risk youth at
Out of the Rain
Youth Shelter

32
youth and families
supported by our
FASD program

350+
supported by
Counselling
Services



Jeneece Place is a program of the Children's Health Foundation of Vancouver Island. It is a home away from home for families who travel to Victoria for their child's medical care. Beacon Community Services has been contracted to run Jeneece Place operations. The House team of nine people ensures someone is on duty at all times. Volunteers support the smooth running of the House as drivers, cooks, gardeners and child minders.

Family Development Counsellors work in partnership with the Ministry of Children and Family Development to provide support to families who are in the care of, or are about to come into the care of, the Ministry. The program supports each individual and the family relationship. Referrals to the program are provided by the Ministry.

Youth and Family Counsellors provide accessible and confidential individual and family support to youth and families experiencing challenges related to parenting, behaviour and other related issues. Services include mediation.

Out-of-School Care provides professional, licensed out-of school care at two sites: KELSET CARE is located at KELSET Elementary and Otter Be Fun is located in Brentwood Bay. Both focus on fun, learning and healthy socializing. Snacks are provided. Beacon also provides a Summer Camp.

Fetal Alcohol Spectrum Disorder (FASD) Program provides instrumental services for children, youth and families affected by FASD. Services include, but are not limited to: FASD Keyworkers, Parenting Supports, Community Awareness and Education. Services are provided from Sooke to Sidney to Salt Spring Island.

Out of the Rain Youth Shelter provides a warm, safe and dry place to sleep during the coldest months of the year. Youth 15-25 are able to access the shelter for support, a meal and/or a place to sleep. Out of the Rain staff provide support without judgment, and offer resources and referrals to community supports. As a result of OTR, homeless youth within Greater Victoria can find a place to lay their heads for the night in a safe, supportive environment.

Individual Learning Center - Youth Counselling and Support Programs. In partnership with School District 63, Beacon assists youth attending ILC with supports and counselling in aid of healthy choices and emotional wellness.

"People will forget what you said, people will forget what you did, but people will never forget how you made them feel." -Maya Angelou

Empowering

THE UNEMPLOYED WITH SKILLS DEVELOPMENT & OPPORTUNITIES



Worked with
692
case-managed
clients at our
offices

90.5%
success rate with 78
Job Options clients

51
youth completed
Springboard to
Success

8390
individual visits
to our Self Service
Resources Centre

824
people served by
our Employment
Services Program

Beacon Community Services has completed its second year of the WorkBC Employment Program, delivered through two Employment Service Centres (ESCs) in Sidney and Salt Spring Island. Beacon also sub-contracts with nine Service Delivery Partners comprised of community-based agencies in the Capital Regional District. We offer a full menu of services to unemployed British Columbians on the Saanich Peninsula and Southern Gulf Islands. Last year we had many visitors at our Self-Serve Resource Centres, with an average of 33 clients per day. Our Resource Centres have computers, faxes, photocopiers, and printers to assist clients in their employment search, as well as a job board with local job postings. Beacon delivered 102 employment preparation workshops over the course of the year, and closely matched the employment outcome rate of ESCs throughout BC. While many clients are still receiving services, over 280 people are now employed.

Springboard to Success is a ten week paid employment program for at-risk youth, ages 15 to 30. Program highlights include Career Exploration, Goal Setting, Workshops and short-term certificates. The program assists participants in obtaining employment with ongoing support, and 94% of our participants achieved successful outcomes. Springboard is funded by the Government of Canada.

Specialized Community Assistance Program, funded by the Ministry of Social Development and Social Innovation, focuses on assisting individuals who have been chronically homeless. This program helps participants to secure and maintain stable housing, connect to rehabilitative services for drug and alcohol addiction, and access volunteer or supported employment opportunities. Each year, Beacon actively works with roughly 20-30 individuals coping with immediate and extreme challenges.

Job Options BC is a ten week program for unemployed individuals 18 years of age and older. It offers five weeks of paid facilitated group sessions, five weeks of job search support, practical work experience, and six months of follow-up support. Job Options is funded by the Ministry of Jobs, Tourism and Skills Training and the Canada-British Columbia Labour Market Agreement.

Beacon completed its final year of providing the **Targeted Skills Shortages Program (TSSP)**. The focus was to help businesses and non-profit organizations by providing funds for training low-skilled employees. We served 103 people over three years and addressed training needs in multiple sectors, including healthcare, technology and tourism. Beacon sub-contracted with the Association of Service Providers for Employability and Career Training. Funding was provided to ASPECT through the Canada-British Columbia labour Market Agreement.

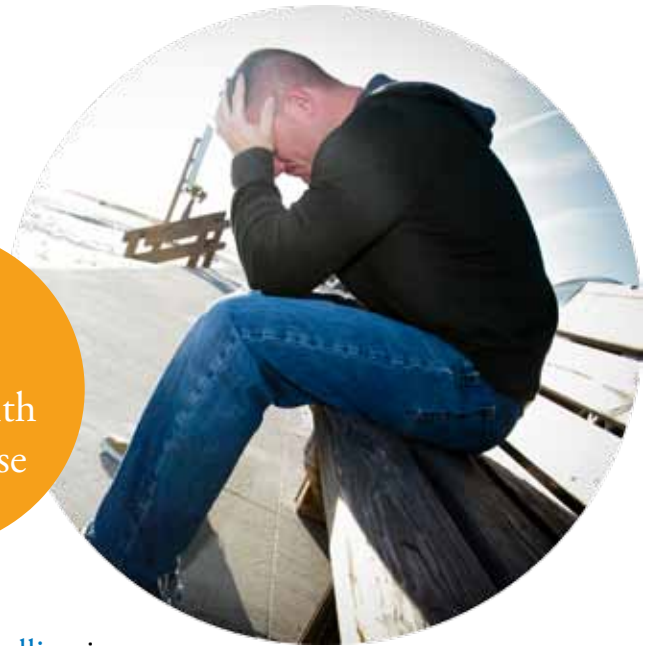
Encouraging

THOSE WHO STRUGGLE WITH MENTAL HEALTH ISSUES

650+
families served
by our programs

180+
supported in secure
housing, food and
social development
services

55
members
registered with
Laurel House



Beacon Community Services promotes self-sufficiency through support, counselling and life skills training for those dealing with mental health, recovery and unresolved life-related issues. Our programs provide an environment which enables clients to seek courage and form new skills, allowing them to live independently, be active, and integrate into their communities.

Adult Counselling provides support for individuals and couples who are experiencing challenges related to relationships, parenting, trauma and unresolved familial issues.

Grief and Loss Counselling is confidential, supportive assistance for people who have experienced, or are dealing with, issues of grief, loss, and bereavement.

Laurel House has been home to programs that support individuals living with mental illness for 40 years. Beacon Community Services began managing the program in 2007 with a focus on developing life skills through member-driven programs. Members enjoy a therapeutic community that includes creative activities, meals, special events and more.

Through the **Third Party Administrative Liaison Program**, Beacon Community Services works with more than 150 marginalized clients in an effort to support them in their search for stability. Staff liaise with the Ministry of Social Development & Social Innovation to support the referred clients in meeting their essential needs. Staff provide support and referral to clients who require additional community resources.

“Your present circumstances don’t determine where you can go; they merely determine where you start.”

-Nido Qubein

Connecting

VOLUNTEERS WITH PEOPLE IN NEED



522
income tax
returns prepared
and filed by
volunteers

682
disabled parking
permits issued

2708
volunteer
medical drives
provided

652
hours of
friendly
visits

The generosity and willingness of our volunteers makes a vital contribution to people's lives – both volunteers and volunteer recipients alike. Volunteering helps people live independently and improves their quality of life. At the same time, it enriches the lives of volunteers and meets community needs that would otherwise be unmet.

Through [Beacon Community Services](#), 560 volunteers selflessly donated their time and provided 930 people with direct one-to-one services. The Volunteer Services office (located in the SHOAL Activity Centre in Sidney) is a drop-in source of information for legal and financial services, safety and security, housing, advocacy, care planning and facilities, health services, and other community resources. Single Seniors 55+ and Peninsula Crossroads Community Justice Program are also under our umbrella.

Our volunteer services include:

- Volunteer Medical Drives
- Volunteer Friendly Visits
- Reassurance Phone Calls
- Volunteer Handyperson
- Youth Employment Program
- Senior Peer Counselling
- Thrift Shop Volunteers
- Community Income Tax Program
- Process Disability Parking Permits
- Jeneece Place
- Out of the Rain Youth Shelter
- SHOAL Reception, Drive Desk, Office, Tuck Shop
- SHOAL Activity Leaders

Hearts of the Community Volunteer Awards

To recognize the remarkable achievements of community volunteers, Beacon Community Services partners with the Peninsula News Review to proudly sponsor the Hearts of the Community Volunteer Awards. Nominations come from members of the community and are reviewed by a panel that includes local mayors and Board of Education representatives. In 2014 we honoured 20 nominees - please see page 13 for more details.

Beacon Community Services Volunteers

We also honour Beacon's own volunteers at special appreciation lunches. On April 11, 2014, we recognized 60 volunteers for long service. Seven of our volunteers were honoured for 20 or more years of service to Beacon:

- Donna Godwin (33 years)
- Joan Ethier (30 years)
- Chester Brown (27 years)
- Marilyn Ball (25 years)
- Joyce Parker (23 years)
- Jill Harrison (20 years)
- Margaret Frew (20 years)

The Volunteer Services office

processes parking permit applications on behalf of Victoria Disability Resource Centre. 662 parking permits were sold in 2013.

We are inspired by our volunteers' dedication and are very grateful for their generosity; they are a true credit to the community.

Energizing

ADULTS AND SENIORS TO STAY SOCIAL, ACTIVE, AND HEALTHY

24,000+
meals served
in the Tides at
SHOAL Dining
Room

6000+
hands of Bridge
played

Over
1290
games of table
tennis played

Over
10,850
cups of coffee served
through catered
events

1500
cribbage games
played



SHOAL Activity Centre is located just across the street from the Sidney public library at 10030 Resthaven Drive. The centre takes a multi-dimensional approach by combining adult/senior recreation programs, volunteer services, food services and youth employment services. The centre also houses Assisted Living residents.

There are extensive facilities at SHOAL, which include: a dining room, a crafts room, a woodworking shop, a ceramics/clay room, a computer lab, a lapidary and silversmithing room, a billiards/snooker room, a large card room, two auditoriums, and multi-purpose activity rooms of all sizes.

SHOAL members enjoy:

- Opportunities to socialize and meet new friends;
- Participation in special events, free seminars and workshops;
- Reduced rates on a wide range of registered and drop-in instructional classes such as crafts, bridge, fitness, computers and much more;
- Volunteer opportunities at the centre and in the community;
- The monthly *Tidelines* newsletter, which provides information about upcoming events and announcements;
- Discounts on facility rentals; and
- Membership with Beacon Community Services included.

SHOAL Activity Centre is the perfect venue for business meetings, memorial teas, receptions, weddings, community group meetings, and family gatherings. Groups of all sizes can be accommodated and the chef is always happy to assist with menu planning. Visit the Beacon website at www.beaconcs.ca, and click on SHOAL to find our Catering information.

“Movement is a medicine for creating change in a person’s physical, emotional, and mental states.”

-Carol Welch

Caring

FOR THOSE WHO ARE SICK, FRAIL, DISABLED OR IN NEED



4000
hours of home
support service
delivered every
day

217
clients admitted
each month

2,875
home support
visits every day

Home Support is a core community service that is required to enable older adults and people with disabilities to live at home for as long as possible. Home Support services maintain clients safely in the community by optimizing their independence and supporting families in their caregiving role. Beacon's focus on providing quality care is seen by our commitment to provide services that meet each client's needs – the right care, at the right time, in the right place, with the right client-staff match, and care specific to each person.

As part of our commitment to quality, Beacon has achieved *Accreditation with Exemplary Standing* for 2012-2016 from Accreditation Canada. We also undergo an intensive annual Occupational Health and Safety review, and have achieved the *Certificate of Recognition for Occupational Health and Safety* for the past four years. These successes exemplify our dedication to meet and continuously raise the standard of worker health and safety in our workplaces.

Beacon provides Home Support services for Veterans' Affairs Canada, the Insurance Corporation of BC, Island Health, and private pay clients. We successfully renewed our contract to provide Home Support Services on behalf of Island Health on South Vancouver Island and the Southern Gulf Islands.

Our staff are required to be certified and registered to provincial standards. They receive additional orientation, training, and opportunities for further professional development. All CHWs must be registered with the BC Care Aide and Community Health Worker Registry. In addition, all Home Support staff require a Criminal Record Check upon hire and every five years thereafter. Experienced Registered Nurses and Licensed Practical Nurses provide supervision and support.

Home Support Staff attended 7780 hours of training in 2013-14 on topics including:

- Muscle-skeletal injury prevention
- Delirium and Dementia
- Fall Prevention
- Medication Administration Safety

- WHMIS
- Safety Information Sessions
- Accident Investigation Workshops

Approximately 900 certified Community Health Workers provide service to over 3,000 clients each month. Our quality care includes assistance with:

- Medications
- Bathing, dressing and grooming
- Activities of daily living
- Dementia care
- Caregiver support and respite
- Chronic disease management
- End of life care
- Mobility with or without mechanical aids
- Pain and symptom management
- Some meal preparation
- Hazard reduction cleaning and laundry
- Oxygen and ventilator care
- Catheter/Ostomy care
- Falls Prevention Program

We value the feedback we receive from our clients and their families, whether it's through our annual Client Satisfaction Survey, phone calls, emails, letters or cards. This helps us to identify areas for improvement and to know what we are doing well on our continuous journey to improve the quality of our services.

Housing

ADULTS, SENIORS AND PEOPLE LIVING WITH DEMENTIA

Relief

for caregivers at our
Piercy Respite
Hotel

Affordable

housing for people
with disabilities at
834 Place

A Social
model of care for
clients at our
Licensed Dementia
Housing



We work to ensure that seniors and people with disabilities have comfortable, affordable living options that allow them to be as independent and self-sufficient as possible. We provide a variety of living options that focus on an individual's abilities rather than their losses through our partnerships with BC Housing, Island Health & the Capital Regional District.

[Brentwood House & Sluggett House Dementia Care](#)

Staff provide a compassionate approach to care where persons living with Dementia are supported to make choices about activities that reinforce independence. Buildings and grounds are fully secure and monitored to ensure safety. This innovative model of care earned an *Excellence in BC Health Care - Award of Merit* for Top Innovation.

[834 Place](#) provides 12 affordable housing suites designated for seniors and people with disabilities. Units are designed to meet Accessibility Standards and have easy access to facilities, bus routes and other amenities. Tenants are independent; however, they may receive community supports or home support services to assist their daily functioning.

[Wakefield Manor and Marguerite Court](#)

These accessible apartments provide affordable housing for seniors and people with disabilities, with rent costs scaled to income. The apartments include space to socialize and are located close to amenities and bus routes to promote self-sufficiency.

[SHOAL Assisted Living & Parry Place Assisted Living](#)

Seniors are supported by personal care services, weekly linen and housekeeping services and two meals. Suites are designed for safety, with accessible bathrooms and walk in showers, and a personal alarm system with 24-hour on-site response. Residents can stay active and connected through a calendar of recreational events.

[Piercy Respite Hotel](#)

The Piercy Respite Hotel offers a safe, secure and supportive environment to guests, enabling their caregivers to have a period of rest and renewal. The dining room, enclosed garden, and fireside lounge provide a comfortable setting for social interaction. The hotel operates with Island Health 24 hours a day, seven days a week.

Sharing

QUALITY GOODS TO FUND PROGRAMS AND PROVIDE
VOLUNTEER AND TRAINING OPPORTUNITIES



Our seven Thrift Shops offer a range of affordable goods from clothing and jewelry to household furnishings and books. The generosity of our community – the volunteers who operate the Thrift Shops, the donors who supply the stock, and our loyal customer base – means the difference for thousands of people in need.

The Beacon Community Services Retail Training Program, funded by the United Way, provides formal customer service and retail skills training to people with diverse abilities. In 2013-2014, 35 individuals completed the Retail Certificate Training Program and 91 individuals completed the Cashier Training Program. The Retail Training Certificate Program is a comprehensive course including customer service, safety, ethics, resume writing, interview preparation, cashier

skills, and merchandise display. The Cashier Training Course is designed for individuals with past work experience, or those that are new to Canada, who require cashier skills for their resumes. The individuals learn how to operate a cash register and Point-of-Sale machine, customer service skills, and safe workplace practices. In the first six months, 35 individuals participated in the new program.

Thrift Shop Benefits:

- Volunteers' lives are enriched by making new social connections while contributing to the community.
- Volunteers gain job skills and retail experience.
- Our Retail Training Program offers eight-weeks of hands on, relevant retail training and experience. Our Cashier Training program offers 3 weeks cashier training and customer service skills.

- 650,000 items donated by the community each year are reused and recycled, helping keep our community a little greener.
- All funds generated at Beacon's Thrift Shops support community programs.

Programs and services funded by Thrift Shops:

- Volunteer Services
- Youth Employment Program
- Peninsula Best Babies
- Toddler & Tot Drop-in Playgroups
- 1-2-3 Activities
- Parent-Child Mother Goose
- School District 61 Crossing Guard Program
- Out of the Rain Youth Shelter
- Brentwood and Sluggett Houses

Surplus goods are donated to the following charitable programs:

- Sidney Food Bank
- Mustard Seed
- Other causes as needed

Brightening

THE LIVES OF THOSE IN NEED

beacon

to act as a
guide through
difficult territory

a source of
light or
inspiration

to illuminate
a safe path



Our name reflects our purpose. Beacon: a source of light or inspiration; to illuminate a safe path; to act as a guide through difficult territory. We empower those in need to navigate to safety. In addition to the programs and services we provide, we inspire others to share their light in the service of others by honouring volunteers in our community.

Youth Scholarships

We encourage youth to get involved in community service by offering the \$1500 Beacon Community Services (BCS) Scholarship to graduating youth in Victoria, Sooke, and the Southern Gulf Islands; the \$500 Donna Godwin Humanitarian Award to Parkland Secondary students; and the \$1500 Major General Gerry Edwards Award to graduating students at Peninsula secondary schools. These awards shine a light on the importance of leadership and community service.

The 2013 scholarship winners were:

BCS Scholarship

- Scharah Cooper, SD 62
- Alastair Kierulf, SD 61

Donna Godwin Humanitarian Award

- Romy Done, SD 63

Maj. Gen. Gerry Edwards Award

- Victoria Lan, SD 63

Hearts of the Community Volunteer Awards

On February 25, 2014, 20 nominees were honoured. We presented an Outstanding Youth Volunteer award and five Excellence in Volunteering Awards. The recipients were:

Outstanding Youth Volunteer

- Sage Broomfield

Excellence in Volunteering

- Shelagh Bell
- Graham Debling
- Melissa Rickson
- Sidney Volunteer Firefighters
- Kristal Underwood

Special thanks to the family of Ardena Simpson, whose donation

in her memory ensured that Sage received a \$1,000 scholarship to support her continuing education.

Help Us Light the Way for Others

As a registered charity, Beacon Community Services relies on the support of volunteers and a variety of funding sources, including the generosity of our community. Many of our programs were made possible thanks to donations and planned gifts.

Donations are gratefully accepted by cheque payable to **Beacon Community Services**, or by clicking the “Donate Now” link at www.beaconcs.ca. We are also grateful for gently used donations to any of our seven Thrift Shops. Or you can share your time and talents by contacting our Volunteer Coordinator, who will help you find a volunteer opportunity that fits with your time and interests, and brings you as much joy as you will bring to others.

Funders & Supporters

Community Partners

Administrators of Volunteers Resources BC
Amber Educational Services
Boys and Girls Club
Brentwood Bay Rotary
Bridges for Women Society
Burnside Gorge Community Services
Camosun College
Capital City Volunteers
Central Saanich Fire Department
Central Saanich Police
Child Care Resource and Referral
Children's Health Foundation of Vancouver Island
City of Victoria
Coalition of Young Parent Programs
Coast Capital Savings
Congregation Emanu-El
District of Central Saanich
District of North Saanich
District of Oak Bay
District of Saanich
Downtown YM/YWCA of Greater Victoria
Elder Friendly Community Network
Esquimalt Neighbourhood Place
Esquimalt Volunteer Services
Fernwood Community Center
First Metropolitan United Church
Health Promotions Canada
Individual Learning Centre
Inter-Cultural Association of Greater Victoria
Island Deaf & Hard of Hearing Centre
James Bay Community Project
Memorial Park Society
Ministry of Community, Aboriginal and Women's Services
Oak Bay Volunteer Services
Panorama Recreation Centre
Peninsula Crossroads Community Justice
Positive Impact Employment Services
Quadra Village Community Services
RCMP – Sidney/North Saanich
Reger Group
Regional Out of School Care Operators
Saanich Neighbourhood Place
Saanich Peninsula Arts and Crafts
Saanich Peninsula Foundation Society
Saanich Volunteer Services Society
School District 63
Sooke Family Resource Center
St. Andrew's Church (Sidney)

St. John the Divine Church
St. Peter's Anglican Church (Victoria)
Success by Six
Town of Sidney
Town of View Royal
Township of Esquimalt
University of Victoria
Vancouver Foundation
Veterans Affairs Canada
Victoria Cool Aid Society
Victoria Disability Resource Centre
Victoria Immigrant & Refugee Centre

Memberships and Affiliations

Association of Family Service Agencies
BC Association of Family Resource Programs
BC Care Providers Association
BC Council for Families
BC Non Profit Housing Association
Better Business Bureau
Canadian Home Care Providers
Coalition of Neighbourhood Houses
Community Social Service Employers Association
Extreme Weather Protocol
Family Caregivers Network
Family Development Response Network
Greater Victoria Chamber of Commerce
Health Employers Association of BC
Island Health Authority
Saanich Peninsula Chamber of Commerce
Saltspring Island Chamber of Commerce
Seniors Serving Seniors
Town of Sidney Healthy Communities Commission
United Way of Greater Victoria
Volunteer Victoria

Major Funders

ASPECT
BC Housing
BC Ministry for Children and Family Development
BC Ministry of Jobs, Tourism, and Innovation
BC Ministry of Social Development & Social Innovation
Capital Regional Housing Corporation
GT Hiring Solutions
Island Health Authority
Service Canada
United Way of Greater Victoria
Victoria Foundation
WorkLink Employment Society

Financials

REVENUE & EXPENDITURES

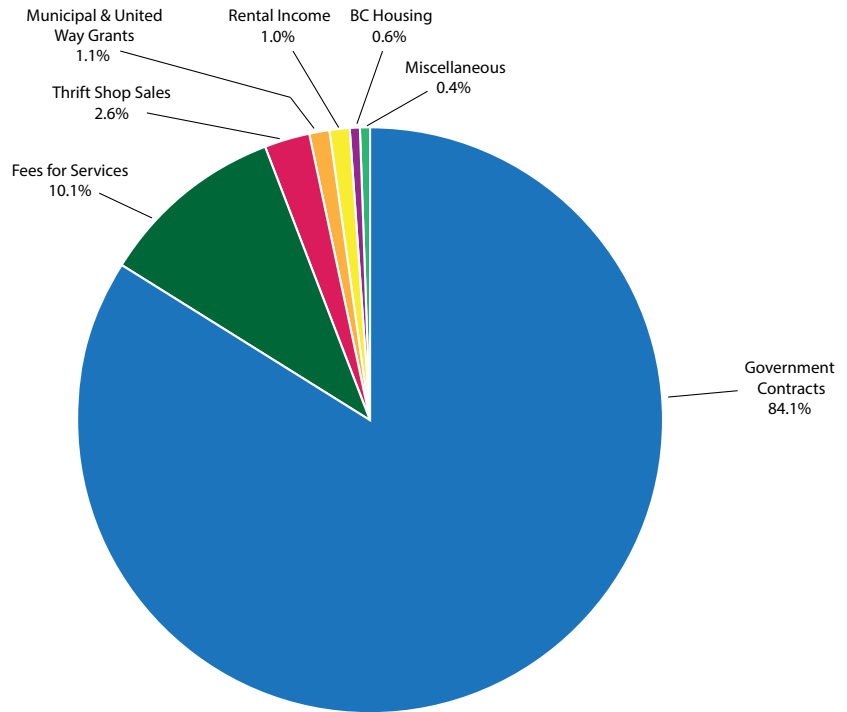
Total Revenue
\$62.9 million

at March 31, 2014

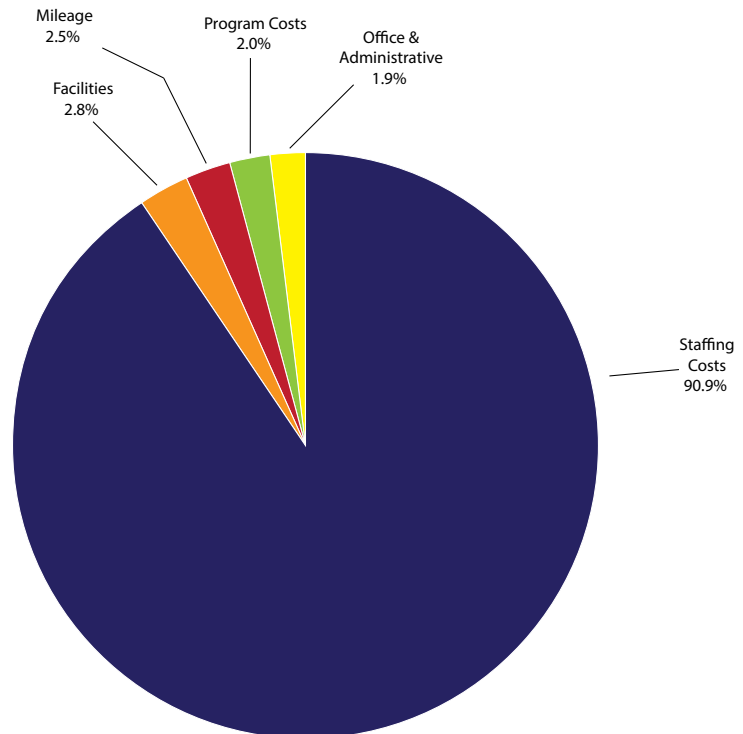
It's been a successful year for Beacon Community Services with management, staff and volunteers working diligently to support our community and provide vital services.

Through careful planning, the support of our funders and partners, the commitment of our staff, and the selfless contributions of our volunteers and donors, we met our financial goals while delivering an array of programs.

Approximately 84% of our revenues are provided by our partners in government at the local, provincial and federal level. The success of our community programs is dependent on our people, and these costs represent more than 90% of our total expenses.



Total Expenditures
\$62.5 million



Contact

INFORMATION

www.beaconcs.ca

www.beaconconnects.ca

Administration & Finance

2723 Quadra Street, Victoria
Ph. 250-658-6407

Child, Youth and Family Services

9860 Third Street, Sidney
Ph. 250-656-0134

Employment Programs

WorkBC Services Centre - Sidney
9860 Third Street, Sidney
Ph. 250-656-0134

WorkBC Satellite Office
268 Fulford Ganges Road,
Salt Spring Island
Phone: 250-931-7687

Sub-Contractor: GT Hiring Solutions
Saanich Office
201-3962 Borden Street, Victoria
Ph: 250-479-9675
Victoria Office
102-415 Gorge Road E, Victoria
Ph: 250-388-5627

Sub-Contractor for WorkLink
2234 Sooke Road, Victoria
Ph: 250-478-9525

JobOptions BC Program
9924 Wakefield Manor, Sidney
Phone: 778-426-4108

SHOAL Centre

10030 Resthaven Drive, Sidney
Ph. 250-656-5537

Home Support

Beacon Home Support Office
2723 Quadra Street, Victoria
Ph. 250-658-6407

Salt Spring Office

2-137 Crofton Road, Salt Spring
Ph. 250-537-9955

Laurel House

1452 Elford Street, Victoria
Ph. 250-595-1572

Marguerite Court

3221 Cedar Hill Road, Saanich
Ph. 250-588-6040

Wakefield Manor

9924 Third Street, Sidney
Ph. 250-588-6040

834 Place

834 Johnson Street, Victoria
250-588-6040

Sluggett House

1336 Marchant Road,
Brentwood Bay
250-544-0925

Brentwood House

1167 Stelly's X Road,
Brentwood Bay
250-652-0643

Specialized CAP, TSSP and FASD Programs

1450 Elford Street, Victoria
Ph. 778-432-2296

Thrift Shops

2676 Quadra Street, Victoria
Ph. 250-479-8849

715 Pandora Avenue, Victoria
Ph. 250-388-3500

9775 Third Street, Sidney
Ph: 250-656-3511

9781 Third Street, Sidney
Ph. 250-655-6416

9760 Fourth Street, Sidney
Ph. 250-656-6828

7105-B West Saanich Road,
Brentwood Bay
Ph. 250-652-0432

7060 West Saanich Road,
Brentwood Bay
Ph. 250-652-6707

Furniture Donation Pick-up
Ph. 250-656-6828

