



Annual Report 2012 - 2013



vision

MISSION & VALUES

Our Mission

Beacon Community Services is a community-based organization of volunteers and staff committed to the efficient and innovative delivery of programs and services, focused on promoting and maintaining individual independence.

Our Vision

A safe, diverse and healthy community where people can meet their needs.

Our Values

Dependability

- do the right thing
- be financially accountable
- think of the longer term future
- ensure client, worker, volunteer safety
- practice prudence

Responsiveness

- input from stakeholders
- assess needs
- forward thinking
- consistent and responsive
- innovative
- decisive

Integrity

- ethical actions
- open governance
- trust
- judiciousness
- accreditation

Volunteerism

- community responsibility
- community engagement
- value of volunteerism to volunteers
- value of volunteerism to community

board

OF DIRECTORS

Penny Thomsen, Chair
Keith Rolfe, Vice-Chair
Geri Hinton, Member at Large
Chuck Rowe, Secretary
Sue Wilson, Treasurer

Joan Axford
Ian Boorman
Greg Conner
Sue Hodgson
Jo-Anne Kahan
Holly Tuokko

We would like to extend our thanks to Ian Boorman and Sue Hodgson, who will be retiring this year after 6 years of service to Beacon Community Services.

message

FROM LEADERSHIP

From the Chair of the Board

The following pages are filled with information about Beacon's accomplishments over the past year and the breathtaking scope of its services and programs. There isn't enough space to cover everything! However, a few of the many highlights include:

- Voluntarily subjecting Beacon to Accreditation Canada's intense scrutiny, earning their top rating: "Accredited with Exemplary Standing." This achievement speaks volumes about the dedication and competence of our staff and volunteers, as well as Beacon's commitment to client service.
- Significant progress on our employee safety initiatives and supporting ill and injured staff in their return to work. The number of work days lost to workplace injury was reduced by more than 25% -- this ultimately reduces WorkSafe BC costs, increases efficiency, and helps improve service for clients.
- We expanded Brentwood House by three units and enhanced the home's amenities: residents living with dementia now enjoy more outdoor and patio space on the second level, an expanded dining room, and a larger common area for activities and events.

From the CEO

We've had an eventful year at Beacon and much has been accomplished. Regardless of increasing demand for our services and a difficult economic climate, Beacon's volunteers and staff are hard at work providing help to those who need it most. Of course, we cannot do this alone and owe a big "thank you" to our funders and partners, whose generous help and commitment enables Beacon to deliver services to enrich our community.

In 2012 Beacon had a number of new projects. We launched Beacon Connects, a resource guide that connects clients with services needed to maintain an independent lifestyle. Jenece Place opened its doors to families last year and Beacon is honoured to earn the contract for day-to-day operations and maintenance. Our WorkBC Employment Services Centre opened last April and is helping Saanich Peninsula residents find meaningful employment. All of this was in addition to our Accreditation renewal in November – talk about a busy year!

In November, the Board of Directors also proudly congratulated CEO Isobel Mackenzie on being honoured by BC Business as BC's "Best CEO" in the non-profit sector. The award recognized her leadership role in Beacon's strong financial performance, people development, innovation, and commitment to social responsibility and sustainability.

Behind every one of these accomplishments, and the many others noted in this report, there's a committed volunteer, employee, partner, donor and/or funder. On behalf of the Board (and the thousands of people whom Beacon serves), "thank you" for your contributions. We look forward to working with you to build on these successes.

Best wishes,



Penny Thomsen, Chair of the Board

24 hours a day, 7 days a week, and 365 days a year, someone from Beacon is in the community working to make a difference in someone's life. Whether that's a volunteer tax return for a low-income senior, an overnight stay from one of our Community Health Workers at a client's home, or staff at Out of the Rain providing a hot meal to homeless youth, there's always a Beacon volunteer or employee lending a helping hand. This is nothing short of inspirational, and our team of over 1100 employees and 500 volunteers deserve much praise. Read on to learn more about our programs, services, and highlights.

My thanks to the hundreds of volunteers and staff who bring care and compassion every day, and to our many funders and community partners for their support and confidence.



Isobel Mackenzie, Chief Executive Officer

enhance

CHILDREN'S HEALTH, SAFETY, AND LOVE OF LEARNING

Beacon Community Services is dedicated to promoting the healthy growth and development of children in our community. Our programs promote healthy pregnancies, foster early learning and literacy, and give support to parents and guardians.



525
families supported
by Early Years
Programs

120
children in after
school care

TEAM
cared for 41 infants
and toddlers

62,000
books collected
for 1000x5
program

Crossing Guards Program assists in keeping our roads safe for students going to and from school, and for all road users in the Greater Victoria area. Serves 25 schools with 36 crossing guards.

Roots of Empathy program provides opportunities for elementary school aged children to develop empathy for others by engaging with visiting infants in the classrooms. There are 10 programs and 10 trained facilitators in schools across the Peninsula.

Peninsula Best Babies supports women during their pregnancy to help deliver healthy babies, and moms and dads learn about food preparation, budgeting, rest, healthy life choices, exercise and stages of child development.

Parent-Child Mother Goose is an early literacy program which teaches parents songs, rhymes, and stories to share with their young children. The program promotes parent-child attachment,

and builds parental confidence and social connections while providing positive language and communication experiences for infants and toddlers.

Sidney StrongStart provides free, school-based early learning programs for pre-schoolers and their parents or caregivers. Children develop important skills through play, art, stories, songs and learning healthy eating habits.

1000 X 5 Children's Book Recycling Project accepts donations of gently used children's books through schools and assessable locations. Volunteers sort books into age-appropriate categories. Books are bagged as gifts for families and distributed to StrongStart Centres, family-serving agencies on the Peninsula, and the Co-op Food Centre. The likelihood of success in school is increased when children have at least a thousand books read to them by the time they are 5 years-old.

Car Seat Safety is offered in partnership with the CRD Traffic Commission. Car Seat Safety information sessions and checks are offered to address child safety, as 50% of child vehicle injuries are from incorrectly installed car seats.

Peninsula Connections for Early Childhood (PCEC) advocates the importance of the early years through events, programs and projects. The benefits of literacy and linkages to community resources are highlighted.

Teen Education and Motherhood (TEAM I and TEAM II) Centres provide licensed infant and toddler care at two sites: Stelly's Secondary and the Individual Learning Center in Saanichton. With in-kind support from School District 63, TEAM provides infants and toddlers a safe environment to explore while their parents attend school. Children receive a variety of experiences to foster their development and get a nutritious breakfast, lunch and snack.

nurture

HEALTHY RELATIONSHIPS FOR YOUTH AND FAMILIES

By providing counselling, mediation and respite for youth and families, we promote the development of life skills and healthy relationships. We work to support parents in their efforts to raise healthy, happy and productive children.

2477

meals served for
at-risk youth at
Out of the Rain
Youth Shelter

32

youth and families
supported by our
FASD program

350+

supported by
Counselling
Services



Jeneece Place is a program of the Children's Health Foundation of Vancouver Island. It is a home away from home for families who travel to Victoria for their child's medical care. Beacon Community Services has been contracted to run Jeneece Place operations. The House team of 9 people ensures someone is on duty at all times. Volunteers support the smooth running of the House as drivers, cooks, gardeners and child minders.

Family Development Counsellors work in partnership with the Ministry of Children and Family Development to provide support to families who are in the care of, or are about to come into the care of, the Ministry. The program supports each individual and the family relationship. Referrals to the program are provided by the Ministry.

Youth and Family Counsellors provide accessible and confidential individual and family support to youth and families experiencing challenges related to parenting, behaviour and other related issues. Services include mediation.

Out-of-School Care provides professional, licensed out-of-school care at two sites: KELSET CARE is at KELSET Elementary in North Saanich and Otter Be Fun is located in Brentwood Bay. Both focus on fun, learning and healthy socializing. Snacks are provided. BCS also provides a Summer Camp.

Fetal Alcohol Spectrum Disorder (FASD) Program provides instrumental services for children, youth and families affected by FASD. Services include, but are not limited to: FASD Key Workers, Parenting Supports, Community Awareness and Education. Services provided from Sooke to Sidney to Salt Spring Island.

Out of the Rain Youth Shelter provides a warm, safe and dry place to sleep during the coldest months of the year. Youth 15-25 are able to access the shelter for support, a meal and/or a place to sleep. Out of the Rain staff provide support without judgment, and offer resources and referrals to community supports. As a result of OTR, homeless youth within Greater Victoria can find a place to lay their heads for the night in a safe, supportive environment.

FLOW Girls' Group encourages girls to get involved in their community, talk about who they are, who they want to be in the world, and how to use their creativity for positive change.

"Family is not an important thing - it's everything."

-Michael J. Fox

empower

THE UNEMPLOYED WITH LEARNING AND OPPORTUNITIES

We work in tandem with our employer network to support local unemployed Canadians looking for work and legally entitled to work in Canada. Our programs build on a client's strengths and resolve barriers to securing and maintaining employment.



On March 31, 2013 Beacon Community Services completed its first year of the WorkBC Employment Program. Beacon delivers WorkBC services through the Employment Service Centres in Sidney and on Salt Spring Island. Additionally, Beacon sub-contracts with 10 community-based Service Delivery Partners in the Capital Regional District. We offer a full menu of employment services to all unemployed British Columbians in Sidney, the Saanich Peninsula and the Southern Gulf Islands.

Our staffed Resource Centres house computers, faxes, printers and scanners to assist clients in their employment search. All available job postings in the region are posted in our offices. Beacon delivered over 100 employment preparation workshops over the course of the year. During our first year, Beacon closely matched the provincial employment outcome rate. While many clients are still participating in WorkBC services, almost half of them have already achieved successful outcomes.

Springboard to Success is a 10 week paid employment program for at-risk youth, ages 15 to 30. Program highlights include Career Exploration, Goal Setting, Workshops and Short-term Certificates. The program assists participants in obtaining employment in an area of their choosing with ongoing support. Participants are also paid a stipend. The program is funded by the Government of Canada.

Specialized Community Assistance Program focuses on assisting individuals who have been chronically homeless. It helps clients to secure and maintain stable housing and to access volunteer or supported employment opportunities. This program is funded by the Ministry of Social Development. At any given time throughout the year, Beacon actively works with about 20-30 individuals coping with immediate and extreme challenges, while maintaining contact with more than 65 people.

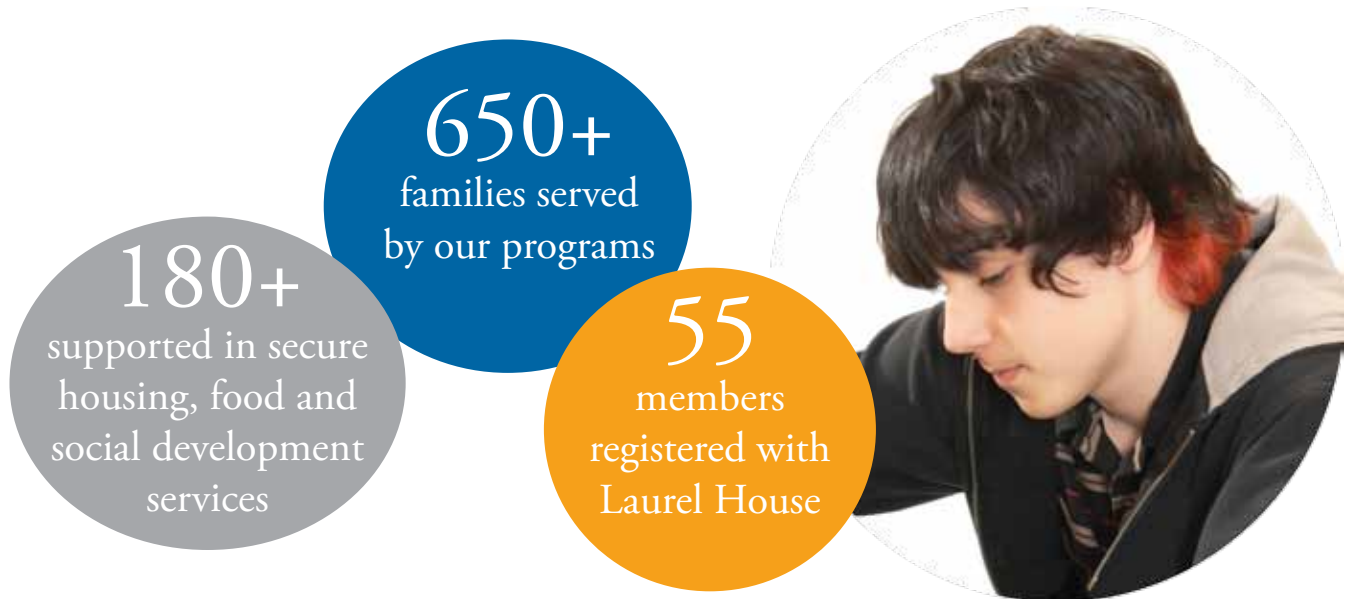
Job Options BC is a 10 week employment program for unemployed individuals 18 year of age and older, offering 5 weeks of paid facilitated group sessions, 5 weeks of job search support, work experience and 6 months of follow-up support. Job Options is funded by the Ministry of Jobs, Tourism and Skills Training and the Canada-British Columbia Labour Market Agreement. Beacon clients achieved an 81% success rate.

Beacon is in its 2nd year of providing the **Targeted Skills Shortages Program (TSSP)**. Focused on helping businesses and non-profit organizations in designated sectors, Beacon provided funds for training to low skilled employees. Beacon sub-contracts with ASPECT, the Association of Service Providers for Employability and Career Training for TSSP. Funding is provided to ASPECT through the Canada-British Columbia labour Market Agreement. Beacon surpassed its annual TSSP target this past year.

encourage

THOSE WHO STRUGGLE WITH MENTAL HEALTH ISSUES

Beacon Community Services promotes self-sufficiency through support, counselling and life skills training for those dealing with mental health, recovery and unresolved life-related issues. Our programs provide an environment which enables clients to seek courage and form new skills, allowing them to live independently, be active and integrate into their communities.



Adult Counselling provides support for individuals and couples who are experiencing challenges related to relationships, parenting, trauma and unresolved familial issues.

Grief and Loss Counselling is confidential, supportive assistance for people who have experienced or are dealing with issues of grief, loss and bereavement.

Laurel House has been home to programs that support individuals living with mental illness for 40 years. Beacon Community Services began managing the program in 2007 with a focus on developing life skills through member-driven programs. Members enjoy a therapeutic community that includes creative activities, meals, special events and more.

Through the **Third Party Administrative Liaison Program**, Beacon Community Services works with more than 150 marginalized clients in an effort to support them in their search for stability. Staff liaise with the Ministry of Social Development to support the referred clients in meeting their essential needs. Staff provide support and referrals to clients who require additional community resources.

“Self-esteem is as important to our well-being as legs are to a table. It is essential for physical and mental health and for happiness.”

-Louise Hart

connect

VOLUNTEERS WITH PEOPLE IN NEED

Volunteerism is the heart of Beacon Community Services' success; it represents the founding values of our organization and our continued commitment to broader community service. We actively encourage people to volunteer, connect volunteers to meaningful opportunities, and recognize the important contributions volunteers make in our community.



465
income tax
returns prepared
and filed by
volunteers

700+
hours of
friendly
visits

500
volunteers
contributed their
time and talent
to Beacon

2300+
volunteer
medical drives
provided

The generosity and willingness of our volunteers make a vital contribution to people's lives – both volunteers and volunteer recipients alike. Volunteering helps people live independently and improves their quality of life. At the same time, it enriches the lives of volunteers and meets community needs that would otherwise be unmet.

Through Beacon Community Services, 500 volunteers selflessly donated their time and provided 1000 people with direct one-to-one services. The Volunteer Services office (located in the SHOAL Activity Centre in Sidney) is a drop-in source of information for legal and financial services, safety and security, housing, advocacy, care planning and facilities, health services, and other community resources. Single Seniors 55+ and Peninsula Crossroads Community Justice Program are also under our umbrella.

Our volunteer services include:

- Volunteer Medical Drives
- Volunteer Friendly Visits
- Reassurance Phone Calls
- Volunteer Handyperson
- Youth Employment Program
- Senior Peer Counselling
- Thrift Shop Volunteers
- Community Income Tax Program
- Processing Disability Parking Permits

Hearts of the Community Volunteer Awards

To recognize the remarkable achievements of community volunteers, Beacon Community Services partners with the Peninsula News Review to proudly sponsor the Hearts of the Community Volunteer Awards. Nominations come from members of the community and are reviewed by a panel that includes local mayors and school board representatives. In February, 22 nominees were honoured. Please see page 13 for a list of the 2013 Hearts Award recipients.

Beacon Community Services Volunteers

We also honour Beacon's own volunteers at special appreciation lunches. On May 31, 2013, we recognized 52 volunteers for long service. Four of our volunteers were honoured for 20 or more years of service to Beacon:

- Rene Laprairie (34 years)
- Donna Godwin (32 years)
- Joan Ethier (29 years)
- Chester Brown (26 years)

The Volunteer Services office

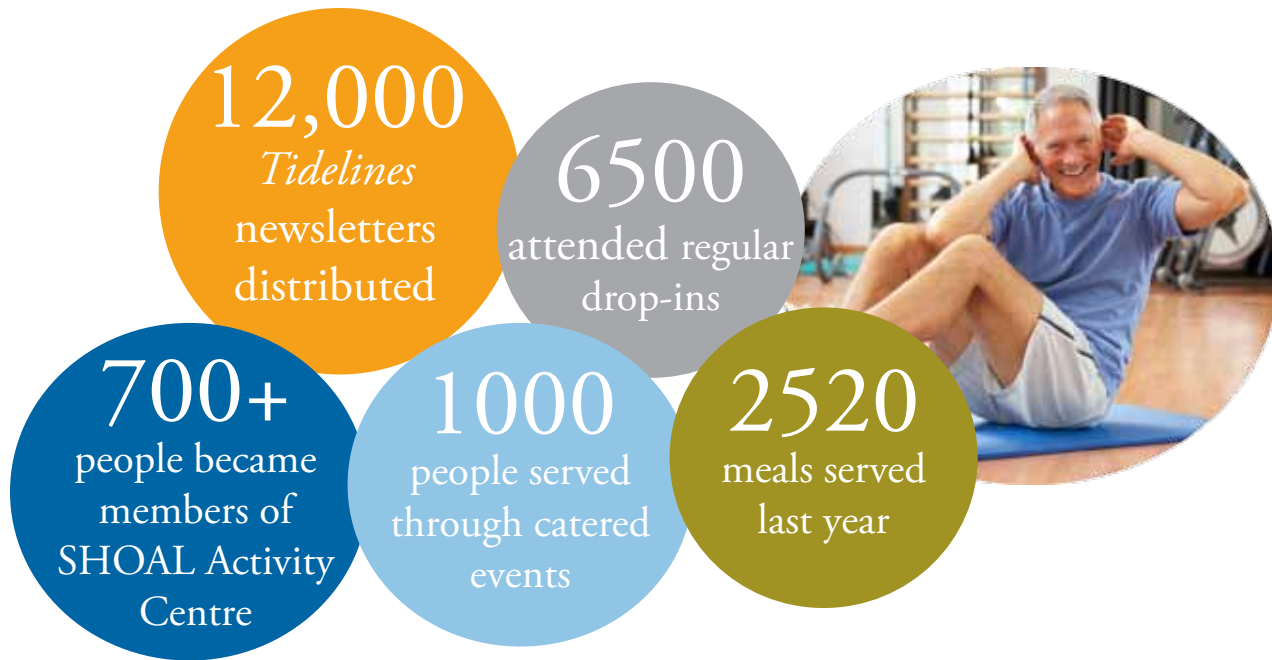
processes parking permit applications on behalf of Victoria Disability Resource Centre. 588 parking permits were sold in 2012.

We are inspired by our volunteers' dedication and very grateful for their generosity; they are a true credit to the community.

energize

ADULTS AND SENIORS TO STAY SOCIAL, ACTIVE, AND HEALTHY

SHOAL Activity Centre provides a gathering place where adults of all ages can stay active and connected with others in their community. We promote self-sufficiency and wellness through a number of programs available to members and non-members alike.



SHOAL Activity Centre is located just across the street from the Sidney public library at 10030 Resthaven Drive. The centre takes a multi-dimensional approach by combining adult/senior recreation programs, volunteer services, food services and youth employment services. The centre also houses Assisted Living residents.

There are extensive facilities at SHOAL, which include: a dining room, a crafts room, a woodworking shop, a ceramics/clay room, a computer lab, a lapidary and silver-smithing room, a billiards/snooker room, a large card room, two auditoriums, and multi-purpose activity rooms of all sizes.

SHOAL members enjoy:

- Opportunities to socialize, meet new friends and celebrate birthdays with others born in the same month;
- Participation in special events, free seminars and workshops;
- Reduced rates on a wide range of registered and drop-in instructional classes such as crafts, bridge, fitness, computers and much more;
- Volunteer opportunities at the centre and in the community;
- The monthly *Tidelines* newsletter, which provides information about upcoming events and announcements;
- Discounts on facility rentals; and
- Membership with Beacon Community Services at no extra cost.

SHOAL Activity Centre is the perfect venue for business meetings, memorial teas, receptions, weddings, community group meetings and family gatherings. Groups of all sizes can be accommodated and the chef is always happy to assist with menu planning. Visit www.beaconcs.ca and click on SHOAL to find a Full Catering package.

“It is health that is real wealth and not pieces of gold and silver.”

-Mahatma Gandhi

comfort

THOSE WHO ARE SICK, FRAIL, DISABLED OR IN NEED

We provide caring support to clients who require assistance to live comfortably, safely, and as independently as possible in their own home for as long as they can. Maintaining the dignity of each individual is essential to our service.



4212
hours of home
support service
delivered every
day

217
clients admitted
each month

2954
home support
visits every day

As part of the Home Support Program's focus on delivering high quality care to all clients, Beacon Community Services was again successfully evaluated by Accreditation Canada, receiving the highest rating: "Accredited with Exemplary Standing." The surveyors visited our clients and their caregivers, met with community partners, and spoke with staff at every level. This included frontline Community Health Workers, Nurses, and Schedulers, the Board of Directors and the Leadership Team. Beacon established a Client Safety Plan and a Quality Management Plan as part of a quality improvement strategy.

Beacon Community Services provides Home Support services for Vancouver Island Health Authority on the South Island and Outer Gulf Islands. We also provide services for Veteran's Affairs, the Insurance Corporation of BC, and private-pay clients. All Home Support staff, with the exception of a small office on Salt Spring Island, work out of our Quadra

Street office in Victoria to provide client-centred care. Each client is assigned to a specific scheduler who is responsible for scheduling that client. CHWs are matched according to specific care needs, and there are targets for how many CHWs are assigned to each client. Some workers have dementia-specific training.

Our staff are required to be certified and registered to provincial standards. They receive additional orientation, training, and opportunities for further professional development. All CHWs must be registered with the BC Care Aide and Community Health Worker Registry. In addition, all Home Support staff require a Criminal Record Check upon hire and every five years thereafter. Experienced Registered Nurses and Licensed Practical Nurses provide supervision and support.

1343 staff attended 5,868 hours of training on topics including:

- First Aid and CPR
- Muscle-skeletal injury prevention
- Delirium and Dementia
- Falls Prevention

- Palliative care
- Medication assessment
- Delegation of tasks

Approximately 900 certified Community Health Workers provide service to over 3,000 clients each month. Our quality care includes assistance with:

- Medications
- Bathing, dressing and grooming
- Activities of daily living
- Dementia care
- Caregiver support and respite
- Chronic disease management
- End of life care
- Mobility with or without mechanical aids
- Pain and symptom management
- Some meal preparation
- Hazard reduction cleaning and laundry
- Oxygen and ventilator care
- Catheter/Ostomy care
- Falls Prevention Program

We value the feedback we receive from clients. In 2012 Beacon conducted its largest client survey to date and the results were encouraging. Over 90% of clients felt their needs were always or usually being met, and 99% felt their Community Health Workers were always or usually reliable.

housing

YOUTH, SENIORS AND PEOPLE LIVING WITH DEMENTIA

We work to ensure that seniors and people with disabilities have comfortable, affordable living options that allow them to be as independent and self-sufficient as possible. With subsidies from BC Housing and the Vancouver Island Health Authority (VIHA), we are able to provide a variety of living options that focus on an individual's abilities rather than their losses.



Brentwood House & Sluggett House Dementia Care

A renovation at Brentwood House added three suites. Enlarged common room and dining room space should be completed by June 2013. These small scale home-like buildings with private suites are designed specifically for seniors with dementia. Staff provide a compassionate approach to care where residents are supported to make choices about activities that reinforce independence. Buildings and grounds are fully secure and monitored to ensure safety.

834 Place provides 12 affordable housing suites designated for seniors and people with disabilities. Units are designed to meet Accessibility Standards and have easy access to facilities, bus routes and other amenities. Tenants are independent; however, they may receive community supports or home support services to assist their daily functioning.

Wakefield Manor and Marguerite Court

These accessible apartments provide affordable housing for seniors and people with disabilities, with rent costs scaled to income. The apartments include space to socialize and are located close to amenities and bus routes to promote self-sufficiency.

SHOAL Assisted Living

Seniors are supported by personal care services, weekly linen and housekeeping services and two meals each day from our SHOAL Centre kitchen. Suites are designed for safety, with accessible bathrooms and walk in showers, and a personal alarm system with 24-hour on-site response. Residents can stay active and connected through a calendar of recreational events and access to the SHOAL Activity Centre.

Quality Care

Beacon Housing Programs successfully participated in several audits last year. We engaged

in Family and Resident Surveys and Licensing Inspections. We were successfully evaluated by Accreditation Canada and received "Accredited with Exemplary Standing." This designation focuses on the delivery of quality care and quality improvement for all clients. Beacon was also successful in the Certificate of Recognition Annual Audit for Staff Health and Safety.

Recreation and Socialization

A variety of activities and programs are offered to residents and families. Highlights from this year include informal get-togethers for families each Sunday, which are very popular. Families get to know each other, thereby strengthening ties with others who can provide support during their journey with loved ones who have dementia. Other events include Robbie Burns Day, Family BBQs and Special Dinners, and Jazz Night.

share

QUALITY GOODS TO FUND PROGRAMS AND PROVIDE VOLUNTEER AND TRAINING OPPORTUNITIES

Beacon Community Services' Thrift Shops provide affordable quality goods in a friendly, warm, and familiar environment for our customers. While customers can find essential items and great treasures at reasonable prices, our volunteers are gaining valuable social connections and retail skills.



\$1.53m
in sales in all
7 Thrift Shops
combined

40,034
Volunteer hours
in Thrift Shops

235,544
transactions occurred
last year

200
Thrift Shop
Volunteers

650,000
items sold in Beacon
Thrift Shops last
year

NEW
Cashier Training
Course

Our seven Thrift Shops offer a range of affordable goods from clothing and jewelry to household furnishings and books. The generosity of our community – the volunteers who operate the Thrift Shops, the donors who supply the stock, and our loyal customer base – means the difference for thousands of people in need.

The Beacon Community Services Retail Training Program, funded by the United Way, provides formal customer service and retail skills training to people with diverse abilities. To date, 112 individuals have participated in the 8 week program. Last year, in response to feedback from our community partners, we created a Cashier Training Course. This course is designed for individuals with past work experience, or those who

are new to Canada, and require cashier skills for their resumes. The individuals learn how to operate a cash register and Point of Sale machine, customer service skills, and safe workplace practices. In the first 6 months, 35 individuals participated in the new program.

Thrift Shop Benefits:

- Volunteers' lives are enriched by making new social connections while contributing to the community.
- Volunteers gain job skills and retail experience.
- Our Retail Training Program offers 8 week sessions to provide hands on, relevant retail training and experience.
- Over 200 volunteers donate more than 40,000 hours of service.
- 650,000 items donated by the community each year are reused

and recycled, helping keep our community a little greener.

- All funds generated at Beacon's Thrift Shops support community programs.

Programs and services funded by Thrift Shops:

- Volunteer Services
- Youth Employment Program
- Peninsula Babies
- Toddler and Tot Drop-in Playgroups
- 1-2-3 Activities
- Mother Goose Rhymes that Bind
- School District #61 Crossing Guard Program
- Out of the Rain Youth Shelter
- Brentwood and Sluggett Houses

Surplus goods are donated to the following charitable programs:

- Sidney Food Bank
- Mustard Seed
- Other causes as needed

brighten

THE LIVES OF THOSE IN NEED

beacon

a source of
light or
inspiration

to act as a
guide through
difficult territory

to illuminate
a safe path



Our name reflects our purpose. Beacon: a source of light or inspiration; to illuminate a safe path; to act as a guide through difficult territory. We empower those in need to navigate to safety.

In addition to the programs and services we provide, we encourage others to share their light in the service of others by honouring volunteers in our community.

Youth Community Service Awards

We encourage youth to get involved in community service by offering the Donna Godwin Humanitarian and Major General Gerry Edwards Awards to graduating students at Peninsula secondary schools. These awards shine a light on the importance of leadership and community service.

Hearts of the Community Volunteer Awards

On February 21, 2013, 22 nominees were honoured and awards were presented to:

- Joan Ethier
Lifetime Service
- Joan Gibb
Overall Service to the Community
- Helen Thomas
Service to Seniors
- Julie Harman
Service to Families and Children
- Peninsula Christmas
Dinner Volunteers
Service or Project by a Group
- Tiana Paltiel
Outstanding Youth Volunteer

Special thanks to the family of Ardena Simpson, whose donation in her memory ensured that Tiana received a \$1,000 scholarship to support her continuing education.

Help Us Light the Way for Others

As a registered charity, Beacon Community Services relies on the support of volunteers and a variety of funding sources, including the generosity of our community. Many of our programs were made possible thanks to donations and planned gifts.

Donations are gratefully accepted by cheque payable to **Beacon Community Services**, or by clicking the “Donate Now” link at www.beaconcs.ca. We are also grateful for gently used donations to any of our 7 Thrift Shops. Or share your time and talents by contacting our Volunteer Coordinator, who will help you find a volunteer opportunity that fits with your time and interests, and brings you as much joy as you will bring to others.

funders

AND SUPPORTERS

We are grateful for the funding and support we receive from government, municipalities, charities, organizations and businesses. In addition, each year we receive hundreds of donations from generous individuals. Thanks to contributions like these, we are able to continue to go above and beyond the needs of our community.

Community Partners

Administrators of Volunteers Resources BC
Boys and Girls Club Services of Greater Victoria
Brentwood Bay Rotary
Bridges for Women Society
Camosun College
Capital City Volunteers
Central Saanich Fire Department
Central Saanich Police
Child Care Resource and Referral (CCRR)
Children's Health Foundation of Vancouver Island
City of Victoria
Coalition of Young Parent Programs
Coast Capital Savings
Congregation Emanu-El
District of Central Saanich
District of North Saanich
District of Oak Bay
District of Saanich
Downtown YM/YWCA of Greater Victoria
Elder Friendly Community Network
Esquimalt Volunteer Services
First Metropolitan United Church
Health Promotions Canada
James Bay Community Project
Memorial Park Society
Ministry of Aboriginal Relations and Reconciliation
Oak Bay Volunteer Services
Our First Nations Communities
Panorama Recreation Centre
Peninsula Crossroads Community Justice
RCMP – Sidney/North Saanich
Regional Out of School Care Operators
Saanich Peninsula Arts and Crafts
Saanich Peninsula Foundation Society
Saanich Volunteer Services Society
School Districts #61, 62, and 63
St. Andrew's Church Sidney
St. John the Divine Church
St. Peter's Anglican Church (Victoria)
Success by Six
Town of Sidney
Town of View Royal

Township of Esquimalt
University of Victoria
Veterans Affairs Canada
Victoria Cool Aid Society
Victoria Disability Resource Centre

Memberships and Affiliations

Association of Family Service Agencies
BC Association of Family Resource Programs
BC Care Providers Association
BC Council for Families
BC Non Profit Housing Association
Better Business Bureau
Canadian Home Care Providers
Coalition of Neighborhood Houses
Community Social Service Employers Association
Extreme Weather Protocol
Family Caregivers Network
Family Development Response Network
Greater Victoria Chamber of Commerce
Health Employers Association of BC
Saanich Peninsula Chamber of Commerce
Saltspring Island Chamber of Commerce
Seniors Serving Seniors
Sidney Business Association
Town of Sidney Healthy Communities Commission
United Way of Greater Victoria
Vancouver Island Health Authority
Volunteer Victoria

Major Funders

ASPECT
BC Housing
BC Ministry for Children and Family Development
BC Ministry of Jobs, Tourism, and Innovation
BC Ministry of Social Development
Capital Region Housing Corporation
GT Hiring Solutions
New Horizons for Seniors Program
Service Canada
United Way of Greater Victoria
Vancouver Island Health Authority
Victoria Foundation

financials

REVENUE & EXPENDITURES

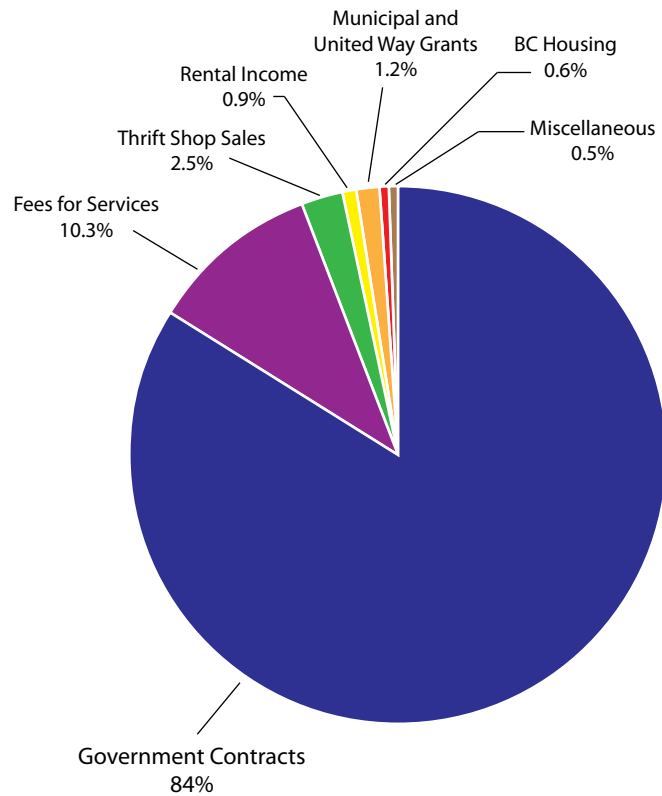
at March 31, 2013

Beacon has completed another successful year in the face of growing demand for services and economic uncertainty. Our Directors, staff and volunteers worked tirelessly to support the community.

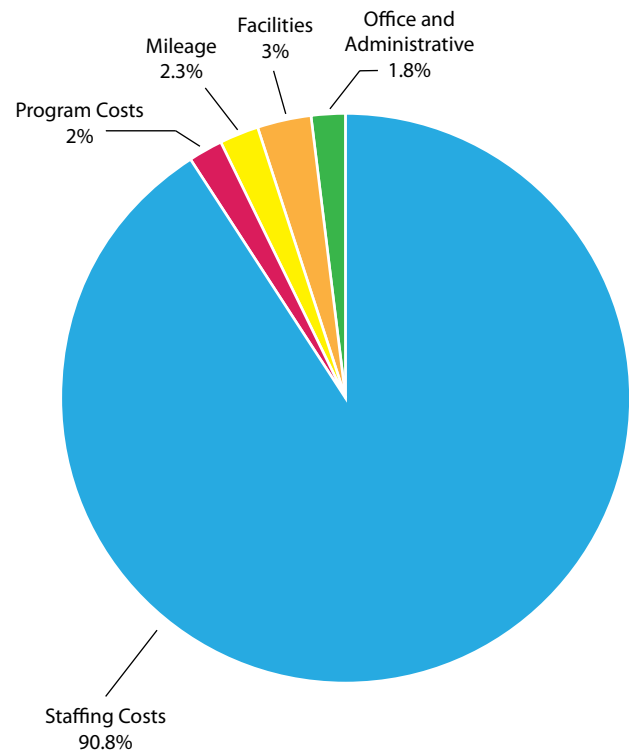
Through the support of our funders and partners, the dedication of our staff, the generosity of our volunteers and donors, and careful planning, we met our financial goals while providing a wide range of much needed services.

Approximately 84% of our revenues are provided by our partners in government at the local, provincial and federal level. The success of our community programs is dependent on our people, and these costs represent more than 90% of our total expenses.

Total Revenue
\$61,515,080



Total Expenditures
\$60,358,672



contact

INFORMATION

www.beaconcs.ca

www.beaconconnects.ca

Administration & Finance

2723 Quadra Street, Victoria
Ph. 250-658-6407

Child, Youth and Family Services

9860 Third Street, Sidney
Ph. 250-656-0134

Employment Programs

WorkBC Services Centre - Sidney
9860 Third Street, Sidney
Ph. 250-656-0134

WorkBC Satellite Office
268 Fulford Ganges Road,
Salt Spring Island
Phone: 250-931-7687

Sub-Contractor: GT Hiring Solutions
Saanich Office
201-3962 Borden Street
Ph: 250-479-9675

Victoria Office
201-1483 Douglas Street
Ph: 250-388-0858

Sub-Contractor: Worklink
Employment Society
2234 Sooke Road, Victoria
Ph: 250-478-9525

JobOptions BC Program
9924 Wakefield Manor, Sidney
Phone: 778-426-4108

Home Support

Beacon Home Support Office
2723 Quadra Street, Victoria
Ph. 250-658-6407

Salt Spring Office
2-137 Crofton Road, Salt Spring
Ph. 250-537-9955

SHOAL Activity Centre

10030 Resthaven Drive, Sidney
Ph. 250-656-5537

Laurel House

1452 Elford Street, Victoria
Ph. 250-595-1572

Marguerite Court

3221 Cedar Hill Road, Saanich
Ph. 250-658-6407

Wakefield Manor

9924 Third Street, Sidney
Ph. 250-658-6407

Sluggett House

1336 Marchant Road,
Brentwood Bay
250-544-0925

Brentwood House

1167 Stelly's X Road,
Brentwood Bay
250-652-0635

Specialized CAP, TSSP and FASD Programs

1450 Elford Street, Victoria
Ph. 778-432-2296

Thrift Shops

2676 Quadra Street, Victoria
Ph. 250-479-8849

715 Pandora Avenue, Victoria
Ph. 250-388-3500

9775 Third Street, Sidney
Ph: 250-656-3511

9781 Third Street, Sidney
Ph. 250-655-6416

9760 Fourth Street, Sidney
Ph. 250-656-6828

7105-B West Saanich Road,
Brentwood Bay
Ph. 250-652-0432

7060 West Saanich Road,
Brentwood Bay
Ph. 250-652-6707

Furniture Donation Pick-up
Ph. 250-656-6828

